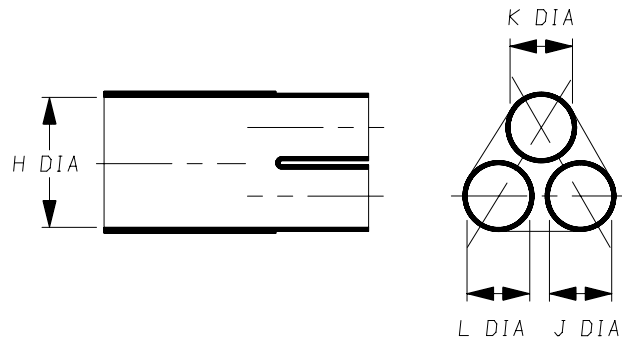
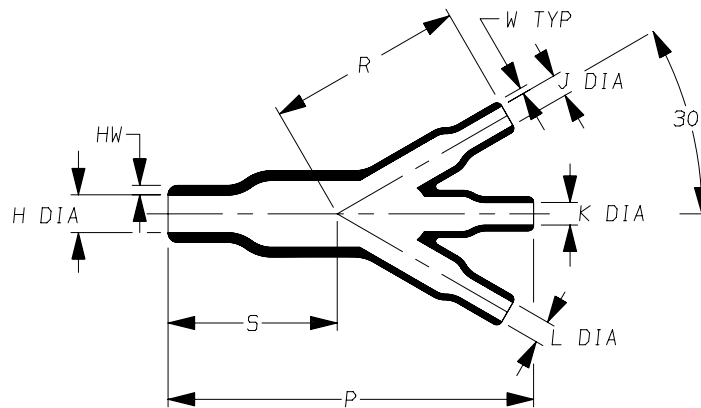


a) Part as supplied.

462W023



b) Part after unrestricted recovery.



**DIMENSIONS** in millimetres  
(in inches, for reference)

| Part No. | H            |              | J            |               | K            |               | L            |               | P            | R            | S            | HW            | W             |
|----------|--------------|--------------|--------------|---------------|--------------|---------------|--------------|---------------|--------------|--------------|--------------|---------------|---------------|
|          | Min<br>a     | Max<br>b     | Min<br>a     | Max<br>b      | Min<br>a     | Max<br>b      | Min<br>a     | Max<br>b      | ±10%<br>b    | ±10%<br>b    | ±10%<br>b    | ±20%<br>b     | ±20%<br>b     |
| 462W023  | 25<br>(0.98) | 10<br>(0.39) | 13<br>(0.51) | 6.0<br>(0.24) | 13<br>(0.51) | 6.0<br>(0.24) | 13<br>(0.51) | 6.0<br>(0.24) | 93<br>(3.66) | 50<br>(1.97) | 43<br>(1.69) | 2.5<br>(0.10) | 1.5<br>(0.06) |

Copyright (!)

The copyright in this drawing is the property of Tyco Electronics UK Ltd. The drawing is issued on the condition that it is not copied, reproduced or disclosed to a third party, either in whole or in part without the prior written consent of Tyco Electronics UK Ltd.

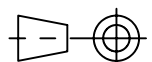
Drawn A.LILLEY. Checked Issue 3 Date January 2007 Conforms to ISO Recommendations

Approval  
Design

MKTG.

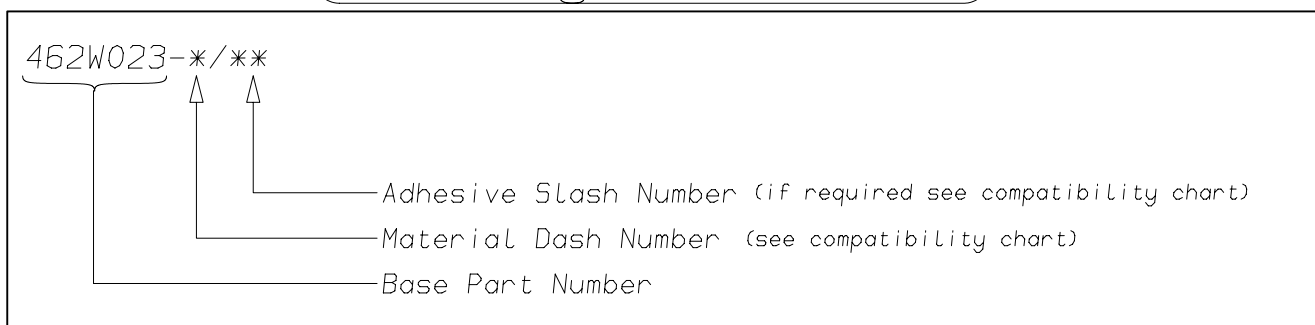
Q.A.

3rd Angle Projection  
Not to Scale



|                |               |  |                                       |
|----------------|---------------|--|---------------------------------------|
| <b>Raychem</b> |               | <b>Specification<br/>Control Drawing</b> | Part Number<br><b>462W023 Issue 3</b> |
| Iss.           | Date          | E.C.R.<br>No.                            | Details of Change                     |
| 2              | May 2002      | ****                                     | Redrawn                               |
| 3              | December 2006 | CR06-DM-104                              | -12 Material description name changed |

### (Ordering Information)



### (COMPATIBILITY CHART)

| Material Dash Number | Material Description            | SPEC Number      | Coating Slash Number |
|----------------------|---------------------------------|------------------|----------------------|
| -3                   | POLYOLEFIN, SEMI-RIGID          | RT-301, RK-6703  | /42, /86, /180       |
| -4                   | POLYOLEFIN, FLEXIBLE            | RT-1304 RT-1050  | /42, /86, /180       |
| -6                   | SILICON                         | RT-602, RK-6706  | N/A                  |
| -12                  | FLUOROELASTOMER, FLEXIBLE       | RT-1312, RW-2071 | /225                 |
| -25                  | ELASTOMER, FLUID RESISTANT      | RT-1325, RK-6713 | /42, /86, /225       |
| -100                 | ZERO HALOGEN                    | RT-1323, RK-6717 | /86, /180            |
| -130                 | POLYOLEFIN, COMMERCIAL FLEXIBLE | RW-2008          | /42                  |

#### NOTES

- ① As supplied dimensions are for uncoated parts, when coating is added entry diameters will reduce by 1.5mm Max.

|  |   |
|--|---|
| Tyco Electronics UK Ltd.<br>Faraday Road,<br>Swindon, Wiltshire, SN3 5HH<br>England<br>Telephone: (01793) 528171 Fax: 572516 | Tyco Electronics Corporation<br>300, Constitution Drive,<br>Menlo Park, CA 94025<br>USA<br>Telephone (650) 361-3860 Fax: (650) 361-5579 |
| Cage Code K1010  | Cage Code 06090   |