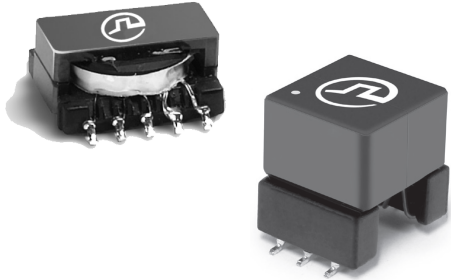


High Isolation Power Transformer

ER11 Platform SMD



- ⌚ Flyback Converter Transformer
- ⌚ Designed for Avago ACPL-32JT and ACPL-302J IGBT Gate Driver
- ⌚ Compact and cost effective industrial design
- ⌚ PH9363NL: Basic insulation, 2.8mm creepage
- ⌚ PH0416NL: Reinforced insulation, 8.3mm creepage, AEC-Q200 qualified

Electrical Specifications @ 25°C - Operating Temperature -40°C to +125°C

Part Number	Inductance (1-5) ($\mu\text{H} \pm 10\%$)	Inductance (6-10) ($\mu\text{H} \pm 10\%$)	DCR (1-5) (Ω MAX)	Leakage Inductance (1-5) (μH Max)	Turns Ratio	Isolated Voltage (Vrms)
PH9363NL	60	240	0.60	3.0	1:2	2500 / 1 minute
PH0416NL	43	172	1.2	2	1:2	5000 / 1 minute

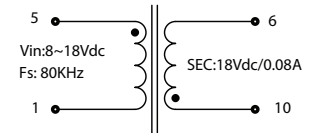
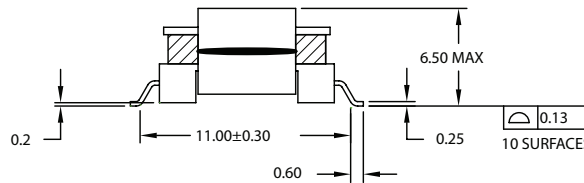
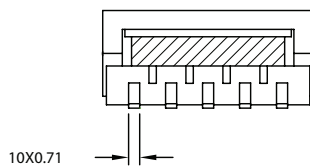
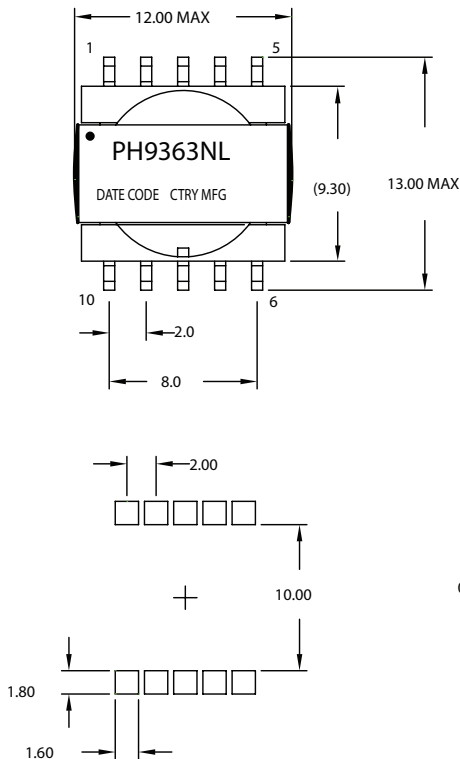
Notes:

- This transformer is approved by Avago to deliver a isolated 18V IGBT drive voltage from a 8V-18V source.
- Optional Tape & Reel packing can be ordered by adding a "T" suffix to the part number
- Other turns ratios and isolation levels available on request.

Mechanical

Schematic

PH9363NL



Weight1.4grams
Tape & Reel500/reel
Tray100/tray

Dimensions: $\frac{\text{Inches}}{\text{mm}}$

Unless otherwise specified,
all tolerances are $\pm \frac{.010}{.025}$

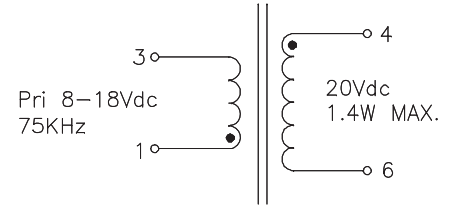
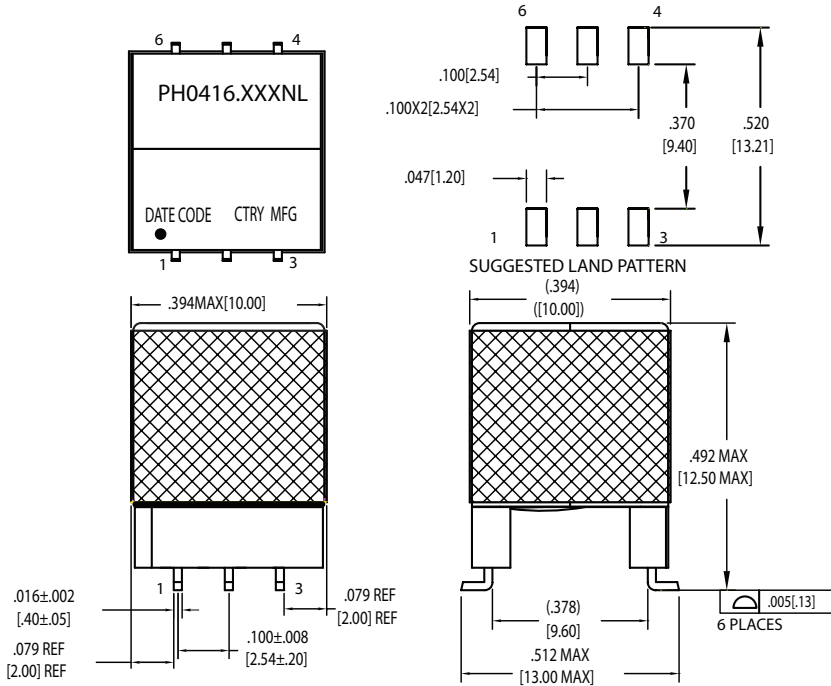
Switching Mode Transformers

Toroid Platform SMD

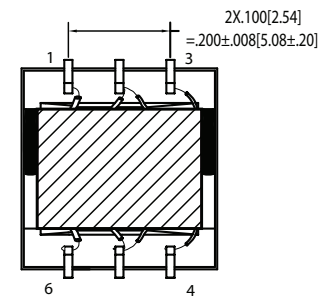
Mechanical

Schematic

PH0416NL



SCHEMATIC



Weight2.6grams
Tape & Reel500/reel
Tray100/tray

Dimensions: $\frac{\text{Inches}}{\text{mm}}$

Unless otherwise specified,
all tolerances are $\pm .010$
0,25

For More Information

Pulse Worldwide Headquarters

15255 Innovation Dr. Ste 100
San Diego, CA 92128

Tel: 858 674 8100
Fax: 858 674 8262

Pulse Europe

Einsteinstrasse 1
D-71083 Herrenberg
Germany

Tel: 49 7032 7806 0
Fax: 49 7032 7806 135

Pulse China Headquarters

B402, Shenzhen Academy of
Aerospace Technology Bldg.
10th Kejinan Road
High-Tech Zone
Nanshan District
Shenzhen, PR China 518057

Tel: 86 755 33966678
Fax: 86 755 33966700

Pulse North China

Room 2704/2705
Super Ocean Finance Ctr.
2067 Yan An Road West
Shanghai 200336
China

Tel: 86 21 62787060
Fax: 86 21 62786973

Pulse South Asia

135 Joo Seng Road
#03-02
PM Industrial Bldg.
Singapore 368363

Tel: 65 6287 8998
Fax: 65 6287 8998

Pulse North Asia

3F, No. 198
Zhongyuan Road
Zhongli City
Taoyuan County 320
Taiwan R. O. C.

Tel: 886 3 4356768
Fax: 886 3 4356823 (Pulse)
Fax: 886 3 4356820 (FRE)

Performance warranty of products offered on this data sheet is limited to the parameters specified. Data is subject to change without notice. Other brand and product names mentioned herein may be trademarks or registered trademarks of their respective owners. © Copyright, 2016. Pulse Electronics, Inc. All rights reserved.