

3 RECOMMENDED PATTERN

RECOMMENDED METAL MASK THICKNESS: 120 μm
 RECOMMENDED MASK OPENING RATIO: 80% FOR LEAD PAD

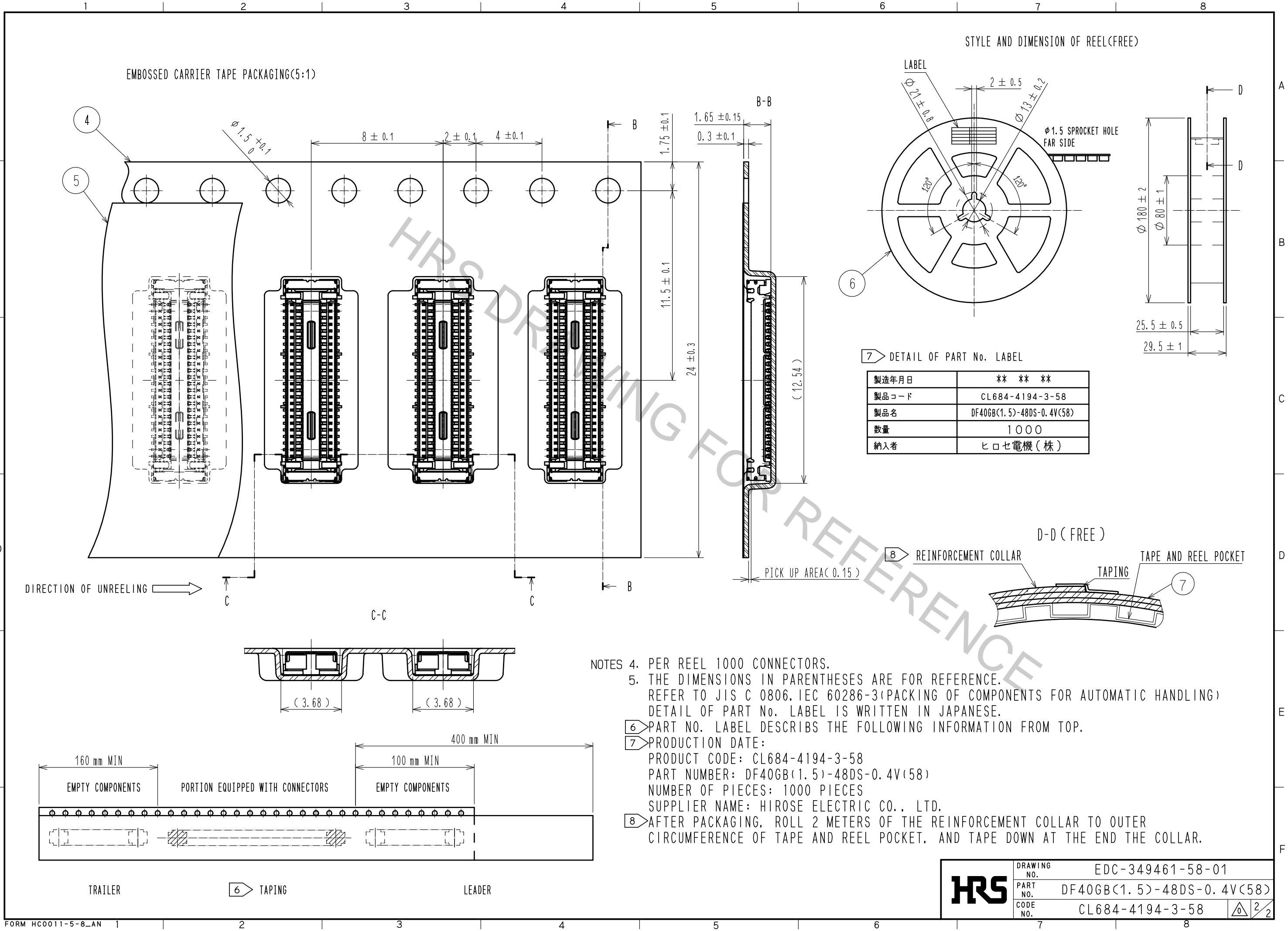
- NOTES)
1. ALL LEADS METAL FITTINGS CO-PLANARITY SHALL BE 0.1mm MAX.
 2. IS NON-CONDUCTIVE AREA.
 3. RECOMMENDED WAY FOR USE IS CONTACT PIN : 40PIN. GROUND PIN : 8PIN.

NO.	MATERIAL	FINISH . REMARKS	NO.	MATERIAL	FINISH . REMARKS
2	PHOSPHOR BRONZE	CONTACT AREA: Au 0.05 μm MIN SMT LEAD: Au 0.05 μm MIN UNDERPLATING: NICKEL 1 μm MIN	7	PS	CLEAR(REINFORCEMENT COLLAR)
1	LCP	BLACK, UL94V-0	6	PS	BLACK(PLASTIC REEL)
			5	POLYESTER	CLEAR(COVER TAPE)
			4	PS	CLEAR(EMBOSSED CARRIER TAPE)
			3	PHOSPHOR BRONZE	CONTACT AREA: Au 0.05 μm MIN SMT LEAD: Au 0.05 μm MIN UNDERPLATING: NICKEL 1 μm MIN

UNITS	SCALE	COUNT	DESCRIPTION OF REVISIONS	DESIGNED	CHECKED	DATE
mm	10:1	△	APPROVED : MO. ISHIDA 15.07.01			
			CHECKED : TS. MIYAZAKI 15.07.01			
			DESIGNED : SH. HOSODA 15.07.01			
			DRAWN : KR. AJITO 15.07.01			

DRAWING NO.	EDC-349461-58-01	
PART NO.	DF40GB(1.5)-48DS-0.4V(58)	
CODE NO.	CL684-4194-3-58	1/2

Apr.1.2017 Copyright 2017 HIROSE ELECTRIC CO., LTD. All Rights Reserved.



7) DETAIL OF PART No. LABEL

製造年月日	** ** *
製品コード	CL684-4194-3-58
製品名	DF40GB(1.5)-48DS-0.4V(58)
数量	1000
納入者	ヒロセ電機(株)

- NOTES
4. PER REEL 1000 CONNECTORS.
 5. THE DIMENSIONS IN PARENTHESES ARE FOR REFERENCE. REFER TO JIS C 0806, IEC 60286-3(PACKING OF COMPONENTS FOR AUTOMATIC HANDLING) DETAIL OF PART No. LABEL IS WRITTEN IN JAPANESE.
 - 6) PART No. LABEL DESCRIBES THE FOLLOWING INFORMATION FROM TOP.
 - 7) PRODUCTION DATE:
 - PRODUCT CODE: CL684-4194-3-58
 - PART NUMBER: DF40GB(1.5)-48DS-0.4V(58)
 - NUMBER OF PIECES: 1000 PIECES
 - SUPPLIER NAME: HIROSE ELECTRIC CO., LTD.
 - 8) AFTER PACKAGING, ROLL 2 METERS OF THE REINFORCEMENT COLLAR TO OUTER CIRCUMFERENCE OF TAPE AND REEL POCKET, AND TAPE DOWN AT THE END THE COLLAR.

HRS	DRAWING NO.	EDC-349461-58-01
	PART NO.	DF40GB(1.5)-48DS-0.4V(58)
	CODE NO.	CL684-4194-3-58
		2/2