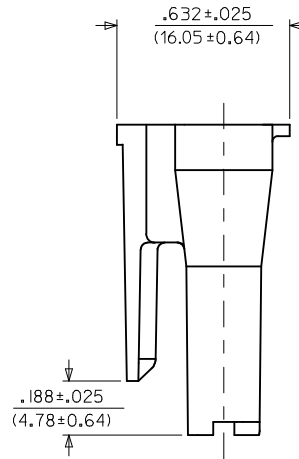
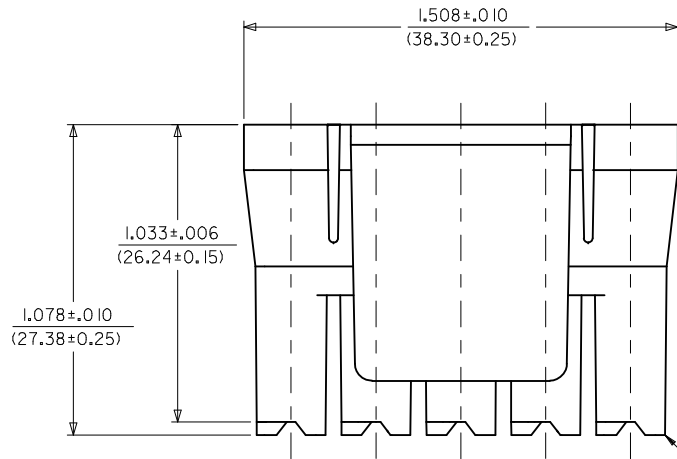


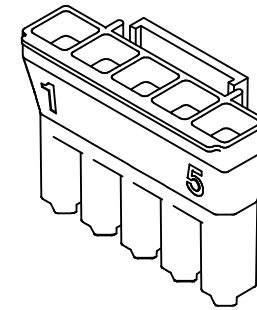
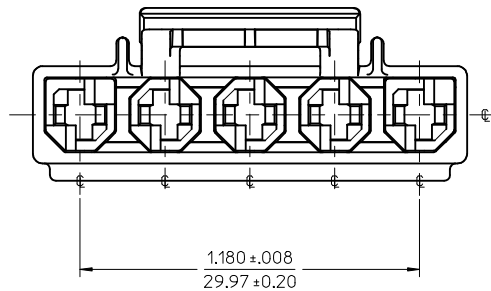
NOTES:

1. MATERIAL: SEE CHART.
2. THIS CONNECTOR HOUSING FOR USE WITH 43375-**** TERMINALS.
3. THIS CONNECTOR HOUSING WILL MATE TO A-43160-****5, 43180-****5, AND 43680-****5 HOUSINGS.
4. PRODUCT SPECIFICATION: PS-44441-9999.
5. PACKAGING: PK-44441-001.
6. FOR V-0 AND GLOW-WIRE MATERIAL: PARTS CONFORM TO CLASS 'B' REQUIREMENTS OF COSMETIC SPECIFICATION PS-45499-002 BUT, MEETS CLASS 'C' REQUIREMENTS FOR BUBBLES, SINK AND DISCOLORATION.

ITEM NUMBER	MATERIAL	COLOR
44441-2005	NYLON 66, UL94V-0,	BLACK
44441-1005	NYLON PA66, UL94V-2	NATURAL (TRANSLUCENT)
44441-3005	NYLON, UL94V-2 IEC 60335-1 GLOW WIRE CAPABLE	BLACK



CIRCUIT 1



44441-005
(NO SCALE)

NOTE 6 IEC NO: UCP2015-3600 DRAWINGS: 2015/03/04 CHKD:JDFX APPR:FSMITH REV: F2	QUALITY SYMBOLS ∇=0 ∇=0 ∇=0	GENERAL TOLERANCES (UNLESS SPECIFIED) mm INCH 4 PLACES ± --- ± --- 3 PLACES ± --- ±.010 2 PLACES ± 0.25 ±.014 1 PLACE ± 0.35 ± --- 0 PLACE ± ±	DIMENSION STYLE IN/MM DRAWN BY DATE AELHAG 2010/09/20 CHECKED BY DATE JBELL 2010/09/20 APPROVED BY DATE FSMITH 2010/10/07	SCALE DESIGN UNITS INCH TITLE 5-CIR. RECEPT. HOUSING .125 X .020 FLAT BLADE TPA W/THUMB LATCH molex DOCUMENT NO. SD-44441-005 SHEET NO. 1 OF 1
	ANGULAR ±1/2° DRAFT WHERE APPLICABLE MUST REMAIN WITHIN DIMENSIONS		MATERIAL NO. SEE CHART	THIS DRAWING CONTAINS INFORMATION THAT IS PROPRIETARY TO MOLEX INCORPORATED AND SHOULD NOT BE USED WITHOUT WRITTEN PERMISSION