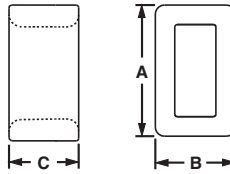
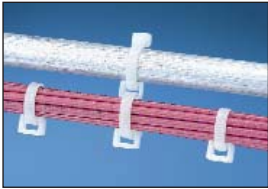


A. System Overview

## Closed Connector Rings

- Connect multiple cable bundles



B1. Cable Ties

B2. Cable Accessories

B3. Stainless Steel Ties

C1. Wiring Duct

C2. Surface Raceway

| Part Number    | Used with Cable Ties† | Length A |      | Width B |     | Height C |     | Material                    | Color   | Environment      | Mounting Method | Std. Pkg. Qty. | Std. Ctn. Qty. |
|----------------|-----------------------|----------|------|---------|-----|----------|-----|-----------------------------|---------|------------------|-----------------|----------------|----------------|
|                |                       | In.      | mm   | In.     | mm  | In.      | mm  |                             |         |                  |                 |                |                |
| <b>CR2-M</b>   | M, I, S               | 0.33     | 8.4  | 0.20    | 5.1 | 0.20     | 5.0 | Nylon 6.6                   | Natural | Indoors          | Cable Ties      | 1000           | 10000          |
| <b>CR4H-M</b>  | M, I, S, HS, LH       | 0.57     | 14.5 | 0.36    | 9.1 | 0.30     | 7.6 |                             |         | Indoors          |                 |                |                |
| <b>CR4H-M0</b> | M, I, S, HS, LH       | 0.57     | 14.5 | 0.36    | 9.1 | 0.30     | 7.6 | Weather Resistant Nylon 6.6 | Black   | Indoors/Outdoors |                 |                |                |

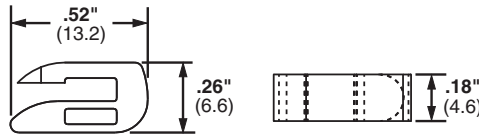
†Cable tie cross section sizes: M = Miniature, I = Intermediate, S = Standard, HS = Heavy-Standard and LH = Light-Heavy.

C3. Abrasion Protection

## Open Connector Ring

- Designed to add on cable bundles without removing cable ties

C4. Cable Management



D1. Terminals

D2. Power Connectors

D3. Grounding Connectors

| Part Number   | Used With Cable Ties† | Material  | Color   | Environment | Mounting Method | Std. Pkg. Qty. | Std. Ctn. Qty. |
|---------------|-----------------------|-----------|---------|-------------|-----------------|----------------|----------------|
| <b>CROS-M</b> | M, I, S               | Nylon 6.6 | Natural | Indoors     | Cable Ties      | 1000           | 5000           |

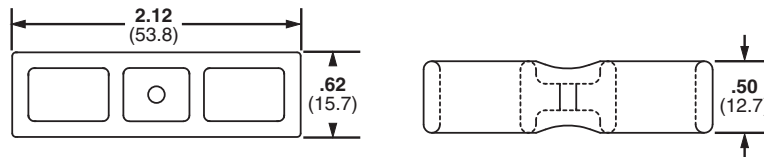
†Cable tie cross section sizes: M = Miniature, I = Intermediate, and S = Standard.

E1. Labeling Systems

## Cable Spacers

- Used to separate and/or hang cords, cables, and tubing

E2. Labels



E3. Pre-Printed & Write-On Markers

E4. Permanent Identification

| Part Number    | Used with Cable Ties† | Material                    | Color | Environment      | Mounting Method | Std. Pkg. Qty. | Std. Ctn. Qty. |
|----------------|-----------------------|-----------------------------|-------|------------------|-----------------|----------------|----------------|
| <b>CSH-D20</b> | M, I, S, HS, LH, H    | Nylon 6.6                   | Black | Indoors          | Cable Ties      | 500            | 2500           |
| <b>CSH-D0</b>  | M, I, S, HS, LH, H    | Weather Resistant Nylon 6.6 | Black | Indoors/Outdoors | Cable Ties      | 500            | 2500           |

†Cable tie cross section sizes: M = Miniature, I = Intermediate, S = Standard, HS = Heavy-Standard, LH = Light-Heavy and H = Heavy.

F. Index